

Product Overview

The AX-CT-x-xxx range of Current Transformers are a range of current transformers that are designed to suit any application. The Moulded or Ring type ranges suit new projects, whilst the Split Core type are ideal for retrofitting.

Features

- Moulded, Ring or Split Core Ranges
- Rating from 50A to 6000A
- 3 Accuracies dependant on VA
- 5 A Secondary

Product Specifications

Overload:		1.2 x Rated current (continuous)
Protection:	Enclosure	IP40
	Terminal cover	IP20
Frequency:		50/60Hz
Max Operating Voltage:		660Vac
Ambient Temp. Range:	Moulded	-20 to +85deg C, 0-95% RH
	Ring	-40 to +70deg C, 0-95% RH
	Split Core	-20 to +70deg C, 0-95% RH
Compliance:		BS7626:1993 IEC185: 1990 BS2757 class Y (insulation)
Country of Origin:		China

Connections:

- S1** Current transformer +
- S2** Current transformer -

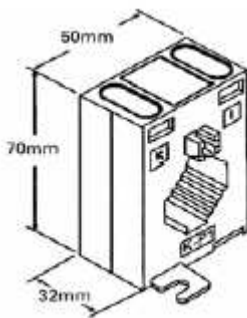
Installation

SAFETY NOTE:

Prior to Installation ensure that all power sources are disconnected and locked-out and remain locked out during Installation and set-up, as severe injury or death can result from Electric Shock due to contact with High Voltage Conductors. Ensure all installations are in compliance with applicable electrical codes and that the installation is carried out by qualified installers familiar with the relevant standards and proper safety procedures for high voltage installations. Never rely on status indication on any device to determine if power is present in a conductor. Solid core devices require that the line to be monitored be disconnected and passed through the centre. Split core devices can be easily installed over existing wires

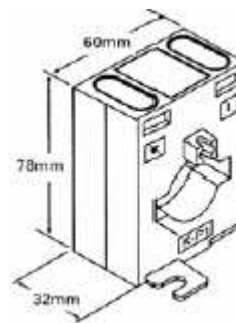
Moulded Type

Type 301



aperture 30 x 10mm

Type 401

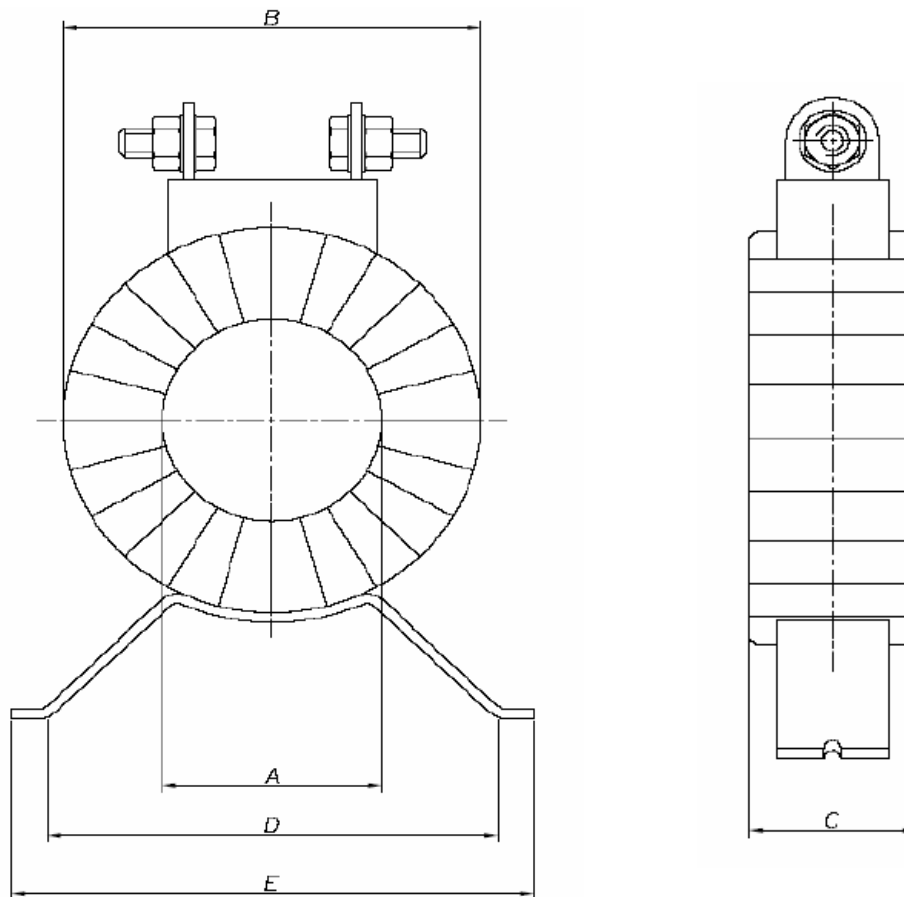


aperture 40 x 12 mm

Part no	Primary Current Amps (A)	Case Type	Rating VA		Height	Depth	Width
			Class 3	Class 1			
AX-CT-M75	75A	301	1		70	32	50
AX-CT-M80	80A	301	1		70	32	50
AX-CT-M100	100A	301	2.5	1	70	32	50
AX-CT-M125	125A	301	2.5	1	70	32	50
AX-CT-M150	150A	301	2.5	1	70	32	50
AX-CT-M200	200A	301	5	2.5	70	32	50
AX-CT-M250	250A	301	5	2.5	70	32	50
AX-CT-M300	300A	301	5	2.5	70	32	50
AX-CT-M400	400A	301	7.5	5	70	32	50
AX-CT-M500	500A	301	7.5	5	70	32	50
AX-CT-M600	600A	401		10	78	32	60
AX-CT-M800	800A	401		10	78	32	60

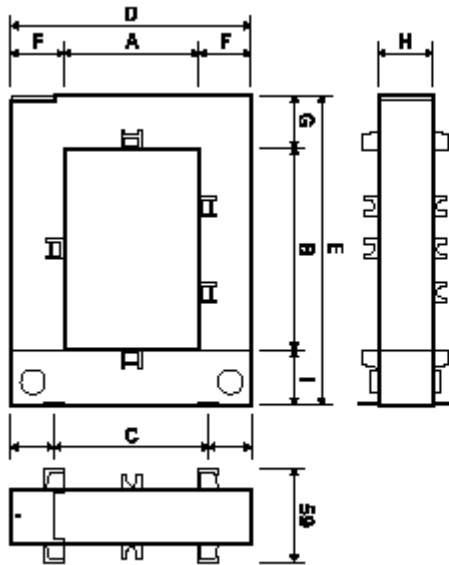
Every effort has been taken in the production of this data sheet to ensure it's accuracy. Axio can not, however, accept responsibility for any damage, expense, injury, loss or consequential loss resulting from any errors or omissions. Axio has a policy of continuous improvement and reserves the right to change this specification without notice.

Ring Type



Part no	Primary			Rating	A	B	Dimensions		E	Wt
	Current	VA	VA				C	D		
	Amps (A)	Class 3	Class 1	Class 0.5	m m	m m	m m	m m	m m	
AX-CT-R50	50A	2			28	70	40	77.5	92.5	0.48
AX-CT-R60	60A	2.5			28	70	40	77.5	92.5	0.48
AX-CT-R75	75A	1.5			42	80	30	86	100	0.5
AX-CT-R80	80A	1.5			42	80	30	86	100	0.5
AX-CT-R100	100A	5	3	1.5	42	80	30	86	100	0.5
AX-CT-R150	150A	10	3	2.5	42	80	30	86	100	0.55
AX-CT-R200	200A	10	5	2.5	42	80	30	86	100	0.6
AX-CT-R250	250A	10	7.5	5	42	80	30	86	100	0.65
AX-CT-R300	300A	15	10	5	45	80	30	86	100	0.7
AX-CT-R400	400A	15	10	5	45	80	30	86	100	0.75
AX-CT-R500	500A	20	15	7.5	60	100	30	86	100	0.65
AX-CT-R600	600A	20	15	10	60	100	30	86	100	0.68
AX-CT-R800	800A	20	15	10	85	120	20	86	100	0.7
AX-CT-R1000	1000A	25	20	15	85	120	20	86	100	0.85
AX-CT-R1200	1200A	25	20	15	85	120	20	86	100	0.9
AX-CT-R1500	1500A	25	20	15	85	120	20	86	100	1.0
AX-CT-R1600	1600A	25	20	15	85	120	20	86	100	1.1
AX-CT-R2000	2000A	25	20	15	125	165	20	86	100	1.25
AX-CT-R2500	2500A	25	20	15	125	165	20	86	100	1.4
AX-CT-R3000	3000A	25	20	15	125	165	20	86	100	1.5

Split Core Type



Model	Case 1	Case 2	Case 3	Case 4	Case 5
A	20	50	80	80	80
B	30	80	80	120	160
C	51	78	108	108	120
D	89	114	144	144	184
E	110	145	145	185	245
F	34	32	32	32	52
G	47	32	32	32	47
H	40	32	32	32	52
I	32	33	33	33	38
Weight (kg)	0.75	0.9	1.0	1.2	3.5

Part no	Primary Current Amps (A)	Rating VA Class 3	Rating VA Class 1	Rating VA Class 0.5	Case Size	Aperture m m
AX-CT-SC100	100A	1.5			1	20 x 30
AX-CT-SC150	150A	2			1	20 x 30
AX-CT-SC200	200A		1.5		1	20 x 30
AX-CT-SC250	250A		2		1	20 x 30
AX-CT-SC300	300A		4	1.5	1	20 x 30
AX-CT-SC400	400A		6	2.5	1	20 x 30
AX-CT-SC500	500A		5	2.5	2	50 x 80
AX-CT-SC600	600A		5	2.5	2	50 x 80
AX-CT-SC700	700A		6	2.5	2	50 x 80
AX-CT-SC800-2	800A		7	2.5	2	50 x 80
AX-CT-SC800-3	800A		7	2.5	3	80 x 80
AX-CT-SC1000	1000A		10	5	3	80 x 80
AX-CT-SC1200	1200A		11	6	4	80 x 120
AX-CT-SC1500	1500A		15	7.5	4	80 x 120
AX-CT-SC2000	2000A		20	15	5	80 x 160
AX-CT-SC2500	2500A		20	15	5	80 x 160
AX-CT-SC3000	3000A		25	20	5	80 x 160
AX-CT-SC4000	4000A		25	20	5	80 x 160
AX-CT-SC5000	5000A		25	20	5	80 x 160
AX-CT-SC6000	6000A		25	20	5	80 x 160