



Product overview

Designed for easy and trouble free installation, the AX-FC-STL series of surface mounted manual fan speed controllers feature an IP54 housing suitable for use in humid environments. Several motors can be connected to one unit so long as the overall current limit is not exceeded. The AX-FC-STL series have suitably rated integral fuses and comply with the relevant CE directives. Only to be used with fans or pumps that are suitable for speed control. The motor should be internally protected against overheating.

Features

- Manual Fan Speed Control
- 1.5A, 3A, 5A, 6A and 10A Models
- Suitable for 230Vac 50/60Hz motors
- Integral Fuse for easy commissioning
- Potentiometer Speed Control
- Surface Mount IP54 Enclosure

Product specifications

Inputs:	230Vac 1 phase 50/60Hz		
Control Type:	Manual via a Potentiometer		
On/Off Switch:	Separate to Potentiometer		
Minimum Speed:	Adjustable via a Trim Pot		
Ambient Temperature:	0-50°C		
Dimensions / Weight / Rating:	STL015	85 x 110 x 75mm / 0.325 Kgs	3A Fusing
	STL030	85 x 110 x 75mm / 0.350 Kgs	5A Fusing
	STL050	90 x 172 x 95mm / 0.440 Kgs	8A Fusing
	STL060	90 x 172 x 95mm / 0.650 Kgs	8A Fusing
	STL100	90 x 172 x 95mm / 0.710 Kgs	14A Fusing
Protection:	IP54		
CE Certificates:	EMC 89/336/CEE and 92/31/CEE LVD 73/23/CEE		
Country of Origin:	EU		

Order codes

AX-FC-STL015	Surface Mounted Manual Fan Speed Controller 1.5Amp
AX-FC-STL030	Surface Mounted Manual Fan Speed Controller 3.0Amp
AX-FC-STL050	Surface Mounted Manual Fan Speed Controller 5.0Amp
AX-FC-STL060	Surface Mounted Manual Fan Speed Controller 6.0Amp
AX-FC-STL100	Surface Mounted Manual Fan Speed Controller 10.0Amp

© Copyright Annicom 2016. All Rights Reserved

Annicom Ltd

Unit 21, Highview, Bordon, Hampshire. GU35 0AX

Tel: +44 (0)1420 487788 Fax: +44 (0)1420 487799

Email: sales@annicom.com Website: www.annicom.com

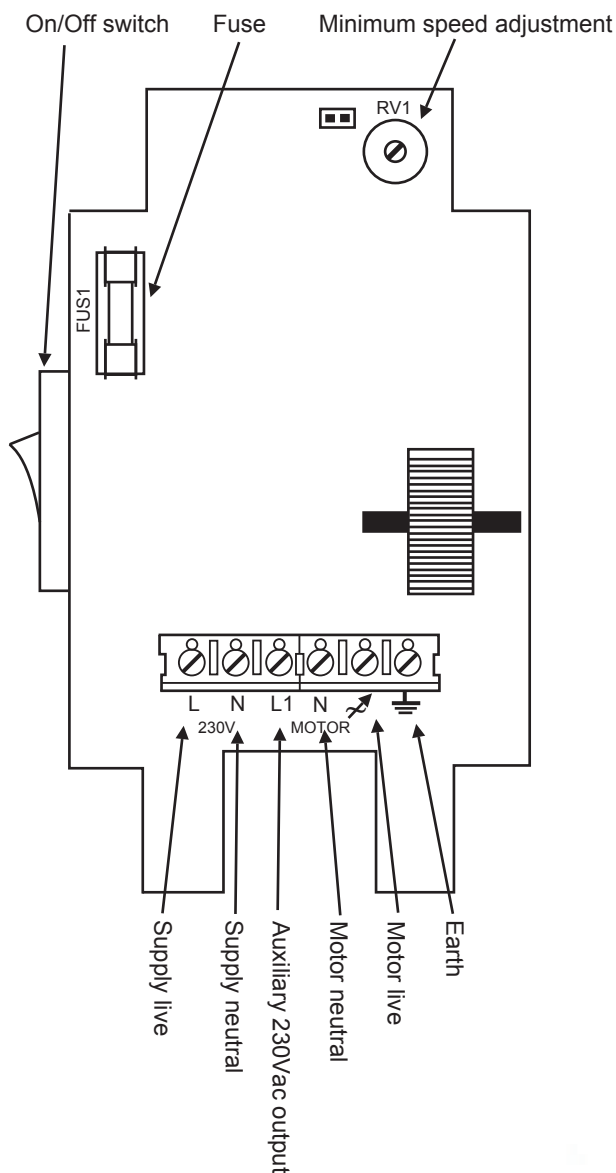
Installation

Installation must only be carried out by a fully trained electrician and must be in accordance with local regulations. Disconnect or otherwise completely turn OFF the electricity supply before installation. It is the installers responsibility to ensure that installation is carried out in a safe manner and that the final installation complies with all relevant standards.

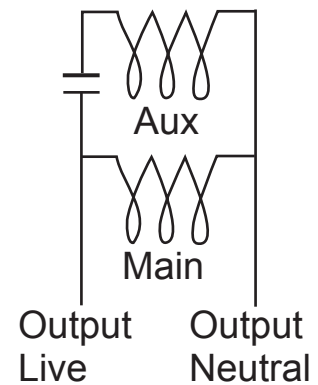
Surface mounting

Disconnect the electricity supply. Remove the controller from the supplied Surface Mount Case by gently pulling. The pull off the adjustment knob and undo the securing nut. The front plate will then lift off. Mount the surface mounting case to the wall using suitable screws. Connect the relevant cables in accordance with the wiring diagram above and in accordance with local regulations. Mount the inner case into the surface mounting case using the screws.

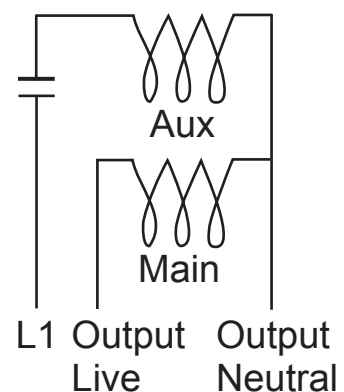
Connections



2-Wire motor:



3-Wire motor:



Every effort has been taken in the production of this data sheet to ensure accuracy. Axio do not accept responsibility for any damage, expense, injury, loss or consequential loss resulting from any errors or omissions. Axio has a policy of continuous improvement and reserves the right to change this specification without notice.